

Rocky Ford Creek, Phos= 151 µg/L, Nitr= 1,810 µg/L; TS-14

TS-12

TS-11

TS-2

TS-1

Lake and Reservoir Management 1996, Nurnberg

Total Phosphorus:

- 50 µg/L = Hypereutrophic;
- 30 µg/L = Eutrophic;
- 10 µg/L = Mesotrophic;
- < 10 µg/L = Oligotrophic;

Nitrogen: NTE 10,000 µg/L for drinking water

October 23, 2019 Water Testing Results

Rocky Coulee µg/L µg/L
TS-01 -> Phos= -- Nitr= --

Crab Creek
TS-02 -> Phos= 32 Nitr= 1,520

Parker Horn
TS-03 -> Phos= 46 Nitr= 767
TS-04 -> Phos= 46 Nitr= 746
TS-05 -> Phos= 37 Nitr= 271

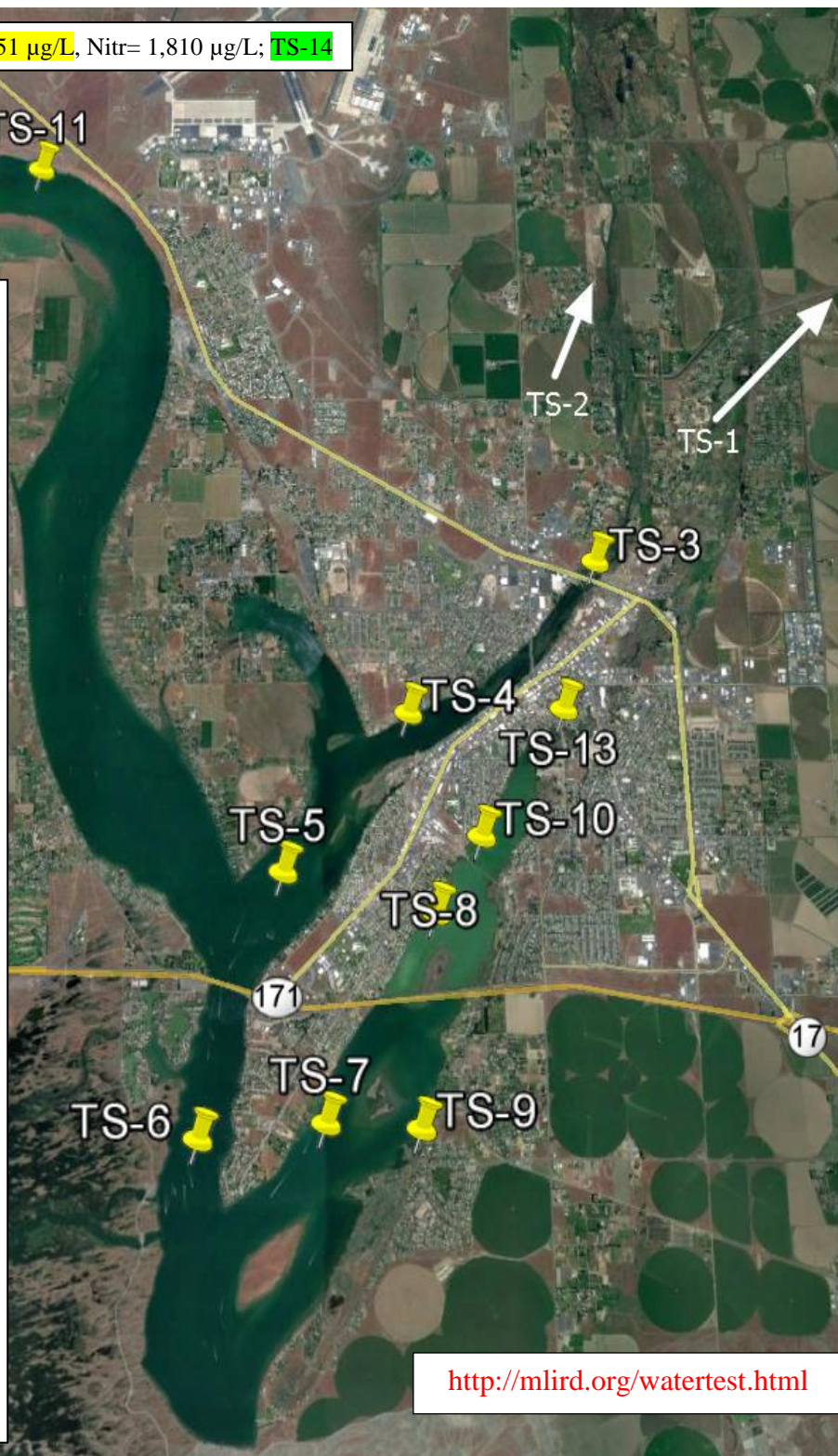
Dam Outlet Area
TS-06 -> Phos= 43 Nitr= 52

Pelican Horn - Montlake
TS-13 -> Phos= 43 Nitr= 3,060
TS-10 -> Phos= 41 Nitr= 51
TS-08 -> Phos= 39 Nitr= 38

Pelican Horn - South
TS-07 -> Phos= 39 Nitr= 36
TS-09b->Phos= 81 Nitr= 12,400

North End
TS-12 -> Phos= 71 Nitr= 1,040
TS-11 -> Phos= 44 Nitr= 240
TS-14 -> Phos= 151 Nitr= 1,810

RCWW Flowing 0 CFS



<http://mlird.org/watertest.html>