

Rocky Ford Creek, Phos= 139 µg/L, Nitr= 1,820 µg/L; TS-14

TS-12

TS-11

TS-2

TS-1

### Lake and Reservoir Management 1996, Nurnberg

#### Total Phosphorus:

- 50 µg/L = Hypereutrophic;
- 30 µg/L = Eutrophic;
- 10 µg/L = Mesotrophic;
- < 10 µg/L = Oligotrophic;

Nitrogen: NTE 10,000 µg/L for drinking water

#### September 25, 2019 Water Testing Results

Rocky Coulee      µg/L      µg/L  
TS-01 -> Phos= --      Nitr= --

Crab Creek  
TS-02 -> Phos= 47      Nitr= 1,950

Parker Horn  
TS-03 -> Phos= 45      Nitr= 1,380  
TS-04 -> Phos= 75      Nitr= 174  
TS-05 -> Phos= 60      Nitr= 112

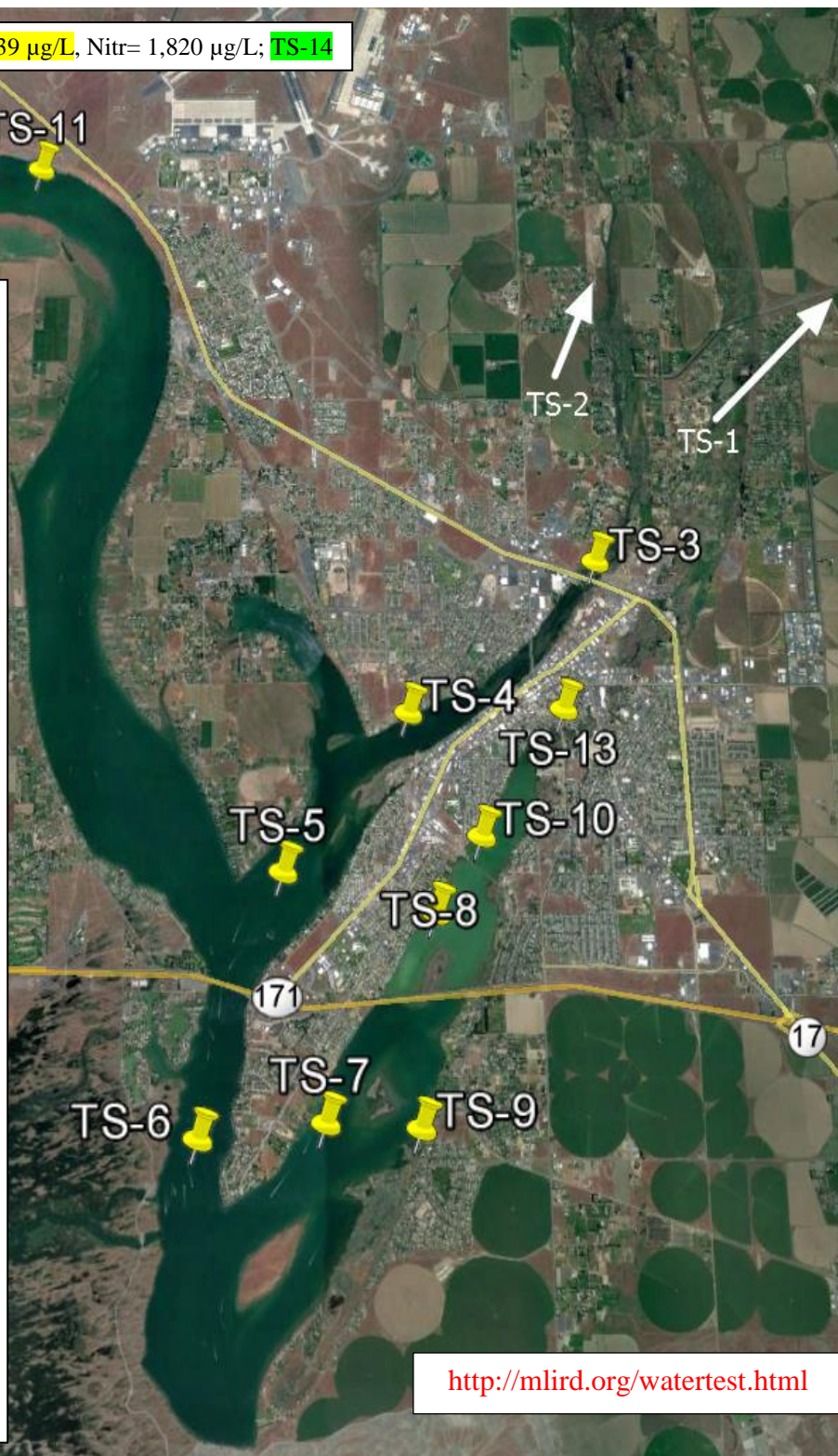
Dam Outlet Area  
TS-06 -> Phos= 60      Nitr= 33

Pelican Horn - Montlake  
TS-13 -> Phos= 33      Nitr= 2,620  
TS-10 -> Phos= 86      Nitr= <10  
TS-08 -> Phos= 107      Nitr= <10

Pelican Horn - South  
TS-07 -> Phos= 53      Nitr= 12  
TS-09b-> Phos= 116      Nitr= 11,900

North End  
TS-12 -> Phos= 95      Nitr= 349  
TS-11 -> Phos= 78      Nitr= <10  
TS-14 -> Phos= 139      Nitr= 1,820

RCWW Flowing 0 CFS



<http://mlird.org/watertest.html>