

Rocky Ford Creek, Phos= 185 µg/L, Nitr= 1,580 µg/L; TS-14

TS-12

TS-11

TS-2

TS-1

Lake and Reservoir Management 1996, Nurnberg

Total Phosphorus:

- 50 µg/L = Hypereutrophic;
- 30 µg/L = Eutrophic;
- 10 µg/L = Mesotrophic;
- < 10 µg/L = Oligotrophic;

Nitrogen: NTE 10,000 µg/L for drinking water

June 18, 2019 Water Testing Results

Rocky Coulee µg/L µg/L
TS-01 -> Phos= -- Nitr= --

Crab Creek
TS-02 -> Phos= 53 Nitr= 2,070

Parker Horn
TS-03 -> Phos= 38 Nitr= 1,000
TS-04 -> Phos= 48 Nitr= 384
TS-05 -> Phos= 19 Nitr= 70

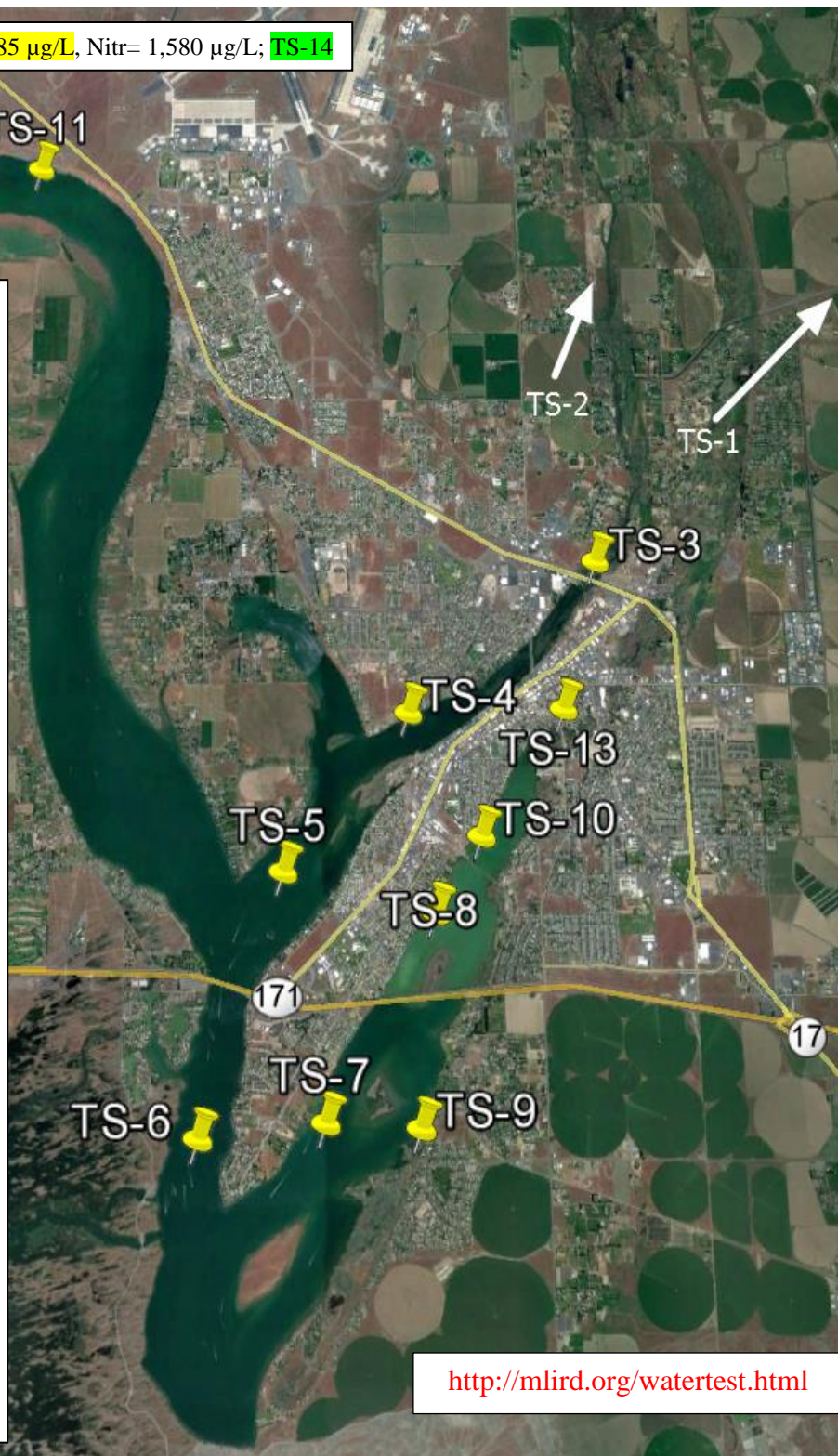
Dam Outlet Area
TS-06 -> Phos= 15 Nitr= 24

Pelican Horn - Montlake
TS-13 -> Phos= 63 Nitr= 1,330
TS-10 -> Phos= 42 Nitr= 272
TS-08 -> Phos= 51 Nitr= <10

Pelican Horn - South
TS-07 -> Phos= 19 Nitr= 14
TS-09b-> Phos= 172 Nitr= 12,200

North End
TS-12 -> Phos= 92 Nitr= 258
TS-11 -> Phos= 40 Nitr= 34
TS-14 -> Phos= 185 Nitr= 1,580

RCWW Flowing 0 CFS



<http://mlird.org/watertest.html>