

Rocky Ford Creek, Phos= 192 µg/L, Nitr= 1,540 µg/L; TS-14

TS-12

TS-11

TS-2

TS-1

Lake and Reservoir Management 1996, Nurnberg

Total Phosphorus:

- 50 µg/L = Hypereutrophic;
- 30 µg/L = Eutrophic;
- 10 µg/L = Mesotrophic;
- < 10 µg/L = Oligotrophic;

Nitrogen: NTE 10,000 µg/L for drinking water

April 25, 2019 Water Testing Results

Rocky Coulee µg/L µg/L
TS-01 -> Phos= 20 Nitr= <10

Crab Creek
TS-02 -> Phos= 81 Nitr= 88

Parker Horn
TS-03 -> Phos= 22 Nitr= 244
TS-04 -> Phos= 20 Nitr= 119
TS-05 -> Phos= 18 Nitr= 140

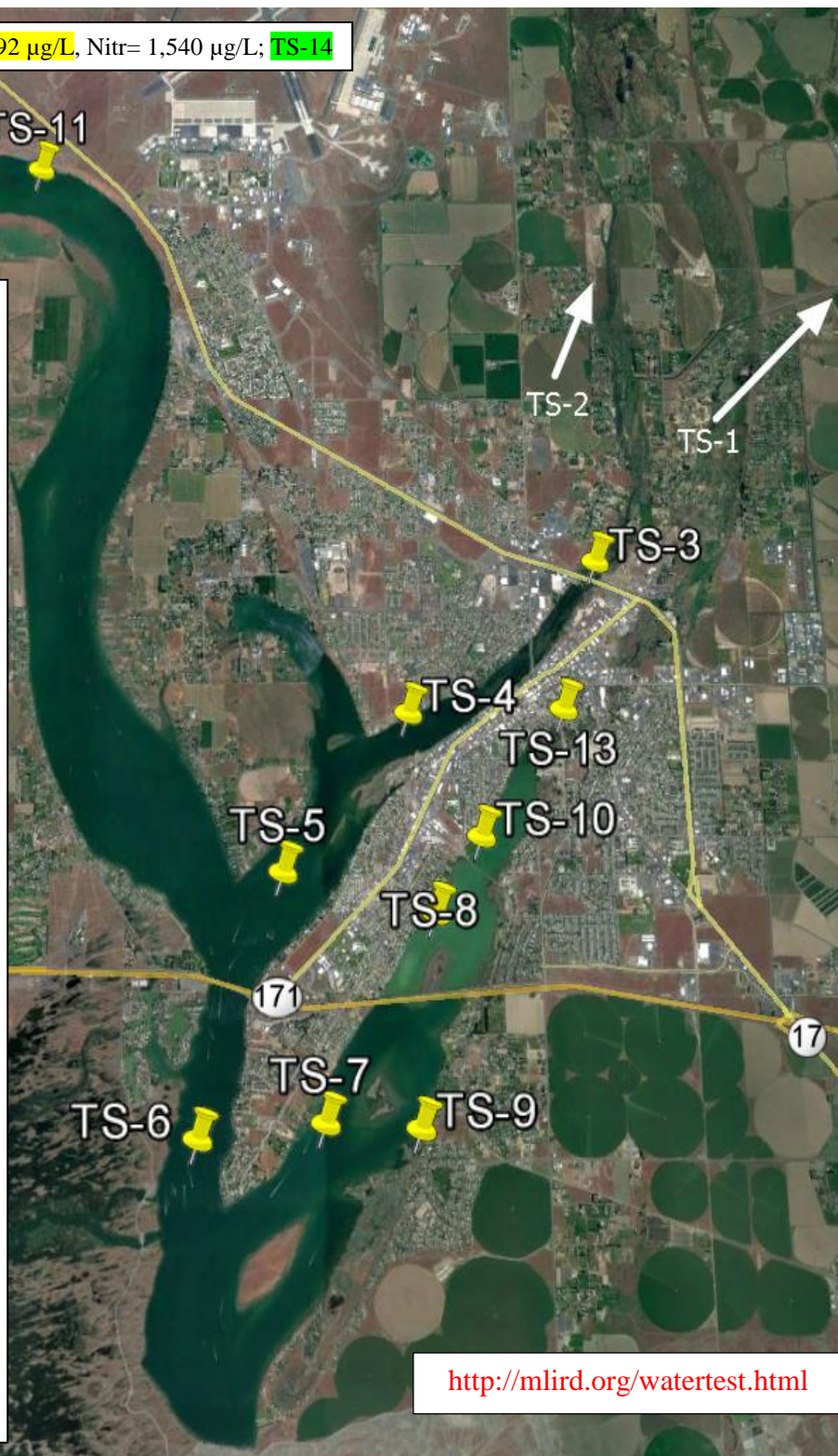
Dam Outlet Area
TS-06 -> Phos= 19 Nitr= 395

Pelican Horn - Montlake
TS-13 -> Phos= 45 Nitr= 2,050
TS-10 -> Phos= 54 Nitr= 105
TS-08 -> Phos= 54 Nitr= 117

Pelican Horn - South
TS-07 -> Phos= 50 Nitr= 398
TS-09b->Phos= 62 **Nitr= 12,300**

North End
TS-12 -> Phos= 97 Nitr= 809
TS-11 -> Phos= 72 Nitr= 583
TS-14 -> **Phos= 192** Nitr= 1,540

RCWW Flowing 450 CFS



<http://mlird.org/watertest.html>